

STOP EXOTIC CAULERPA SEAWEED

**SEE
WEED?
BAG IT.
BIN IT.**



**PROTECT OUR
PARADISE**
Stop the spread of marine pests

Exotic caulerpa is a fast growing, non-native seaweed that can form dense underwater fields, threatening native marine life.

Boaties, fishers and divers – when out on the water, take these simple actions before you move:

- 1. See weed:** When you pull up your anchor, inspect it and the anchor chain for any attached seaweed. Also check any fishing or dive gear that's been in the water.
- 2. Bag it:** If you find any seaweed, remove it and securely bag or contain it to stop it getting overboard and spreading to other areas – the smallest piece can spread.
- 3. Bin it:** If possible, take the seaweed ashore and dispose of it securely away from the beach – for example, in your home rubbish or compost.
- 4.** If you can't do this safely, put it back in the water in the area it came from.

www.biosecurity.govt.nz/caulerpa



Biosecurity New Zealand

Ministry for Primary Industries
Manatū Ahu Matua

Report suspected exotic caulerpa

Help us keep track of where exotic caulerpa seaweed is present.

If you spot this pest – either at sea or on the beach – report it to Biosecurity New Zealand.

THINK YOU'VE SEEN IT?



TAKE A
PHOTO



RECORD YOUR
LOCATION



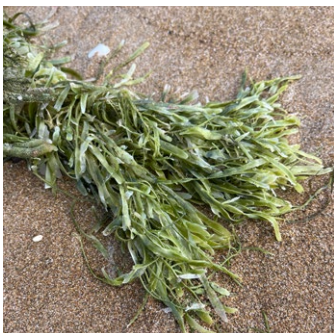
CALL
0800 80 99 66

OR



VISIT
report.mpi.govt.nz

What exotic caulerpa looks like



There are legal rules (known as Controlled Area Notices) and rāhui in place at some locations where exotic caulerpa is present.

Find the most up to date information, including affected areas, areas under controls, maps and photos at www.biosecurity.govt.nz/caulerpa

**PROTECT OUR
PARADISE**
Stop the spread of marine pests